

Blender Bag

(#97000/97001/97002)

1. Description

SPL Blender Bag is laboratory plasticware designed for use in industrial microbiology labs such as food & beverage, environmental/water testing, etc. A complete range of bags is sterile-certified for the safe and quick preparation of solid samples before biological and chemical analysis. They fit to all conventional 400 mL lab blenders and are adapted to all samples.

2. Features

- ❖ Flexible and transparent bag compatible with any lab blender
- ❖ Non-woven filter for stronger filtration power (< 250 µm)
- ❖ Wire tie for convenient experiments (Cat.No. 97002)
- ❖ Disposable

3. Product Range

Cat.No.	Material	Type	Dimensions (mm)	Working Volume (mL)	Sterile	Packaging
97000	PE	Standard	300 * 190	80 – 400	+	50 / 500
97001	PE	Lateral filter	300 * 190	80 – 400	+	50 / 500
97002	PE	Lateral filter, Wire tie	300 * 190	80 – 400	+	50 / 250

4. Certification

SPL Life Sciences hereby certifies that the product identified above, inspected to be in compliance with product quality specification and requirements as documented in our ISO 9001:2015 Quality Management System (K-QA-Q031478) in Korea.

5. Product Photographs



SPL-TDS-BLENDERBAG

For Research Use Only. Not intended for use in diagnostic or therapeutic procedures.
© SPL Life Sciences Co., Ltd., Version 1, MAY. 24th, 2021

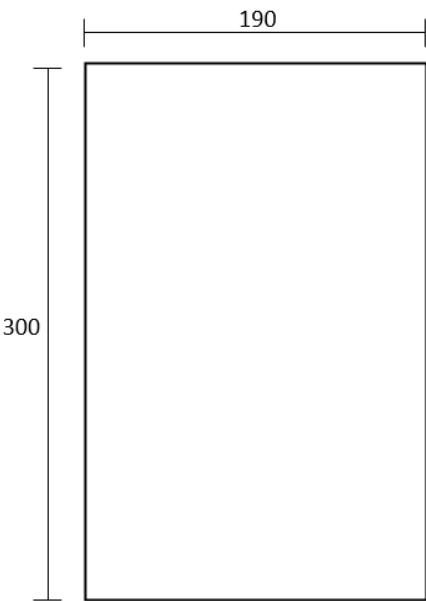
6. Specifications & Technical Drawing

(1) Blender Bag (# 97000/97001)

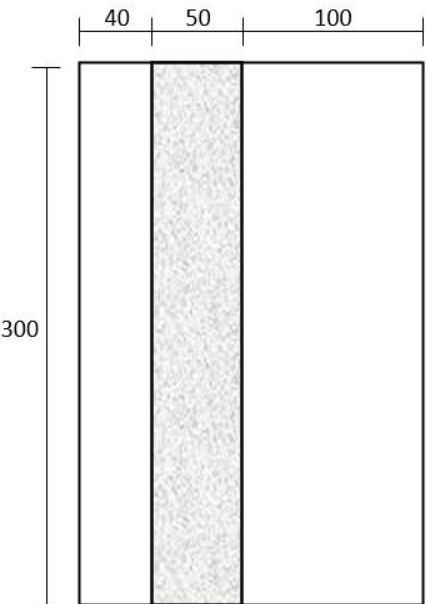
- Specifications

Dimensions		Material	Working Volume	Steriles	SterilesPackaging
Width:	300 mm	PE	80 – 400 mL	+	<ul style="list-style-type: none">▪ Pieces/Sleeve: 50▪ Pieces/Case: 500
Height:	190 mm				

- Technical Drawing



#97000

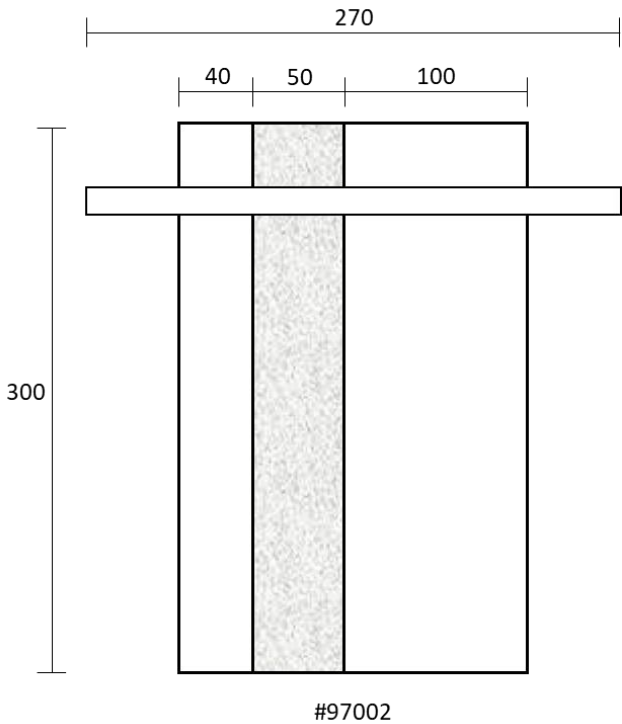


#97001

(2) Blender Bag (# 97002)
- Specifications

Dimensions		Material	Working Volume	Steriles	SterilesPackaging
Width:	300 mm	PE	80 – 400 mL	+	▪ Pieces/Sleeve: 50 ▪ Pieces/Case: 250
Height:	190 mm				

- Technical Drawing



www.spllifesciences.com

For technical assistance, contact SPL R&D Center at:
Tel: +82-31-533-4800; Fax: +82-31-533-1430; e-mail: spl@ispl.co.kr
To place an order, contact your local distributor or
Tel: +82-31-533-4800; Fax: +82-31-533-1430; e-mail: business@ispl.co.kr