

## 1. Product: Fibronectin Coated Ware

SPLCoat™ offers a number of technologies optimized for enhanced cell attachment and growth of fastidious cells, (e.g., primary cells, neuronal cells, endothelial and tumor cells) which may not easily adhere to or differentiate into specialized cell types on traditional surfaces.

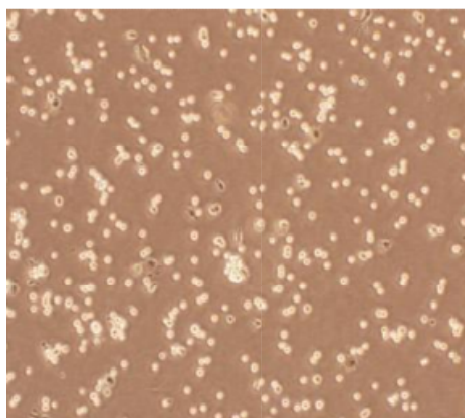
SPL Life Sciences provides a wide range of high-quality Fibronectin coated products. All Fibronectin coated products are produced with optically clear and high quality polymers for microscopy.



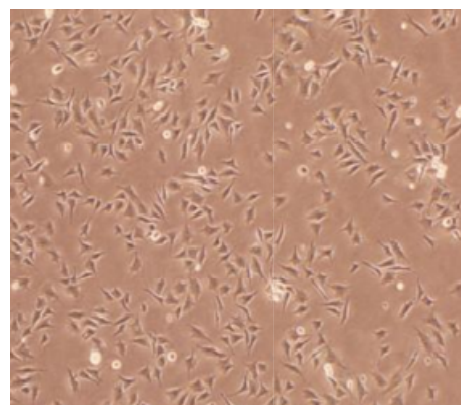
## 2. Experimental condition

- 1) Cell line: BHK21(baby hamster kidney cell)
- 2) Media: serum free RPMI1640
- 3) Culture condition: 37°C, 5% CO<sub>2</sub>

## 3. Results



Control (non-coated)



SPL Fibronectin coated ware

Figure 1. Microscopic observation of cultured cell

## 4. Conclusion

SPL Fibronectin coated ware showed typical cell morphology of BHK21 cells through the enhanced cell-surface adhesion and exhibited more extensive and proliferative ability when compared to the non-coated control product.

## 5. Ordering Information

Cat. No.	Material	Type/ style	External Dimension (mm)	Internal/well Dimension (mm)	Growth Area (cm <sup>2</sup> )	Working Volume (ml)	External Grip	Packaging
<b>Flask</b>								
79025	PS	Filter Cap	-	-	25.00	7.00	-	5 / 10
79125	PS	Plug Cap	-	-	25.00	7.00	-	5 / 10
79075	PS	Filter Cap	-	-	75.00	25.00	-	5 / 10
79175	PS	Plug Cap	-	-	75.00	25.00	-	5 / 10
<b>Dish</b>								
25035	PS	3500x1000	-	35.00 x 9.60	9.40	3.00	+	10 / 20
25060	PS	6000x1500	-	52.80 x 12.80	21.50	5.00	+	10 / 20
25100	PS	9000x2000	-	86.26 x 17.70	57.50	12.50	-	10 / 10
25150	PS	15000x2500	-	140.20 x 23.30	148.00	35.00	-	5 / 5
<b>Plate</b>								
39506	PS	6well	85.40 x 127.60 x 20.20	35.00 x 17.50	9.60	3.00	-	1 / 5
39512	PS	12well	85.40 x 127.60 x 20.20	21.90 x 17.50	3.80	2.00	-	1 / 5
39524	PS	24well	85.40 x 127.60 x 20.20	15.50 x 17.50	1.90	1.00	-	1 / 5
39548	PS	48well	85.40 x 127.60 x 20.20	9.75 x 17.50	0.75	0.50	-	1 / 5
39596	PS	96well	85.40 x 127.60 x 14.40	6.50 x 10.80	0.33	0.20	-	1 / 5
<b>Slide</b>								
30704	PS/Glass/PP	4well	-	-	2.13	0.50 - 1.30	-	6 / 12
30708	PS/Glass/PP	8well	-	-	0.98	0.20 - 0.60	-	6 / 12

[www.spllifesciences.com](http://www.spllifesciences.com)

For technical assistance, contact SPL R&D Center at:

Tel: +82-31-533-4800; Fax: +82-31-533-1430; e-mail: [spl@ispl.co.kr](mailto:spl@ispl.co.kr)

To place an order, contact your local distributor or

Tel: +82-31-533-4800; Fax: +82-31-533-1430; e-mail: [business@ispl.co.kr](mailto:business@ispl.co.kr)